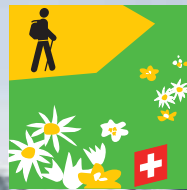




VIA ALPINA



Waadtländer Alpen

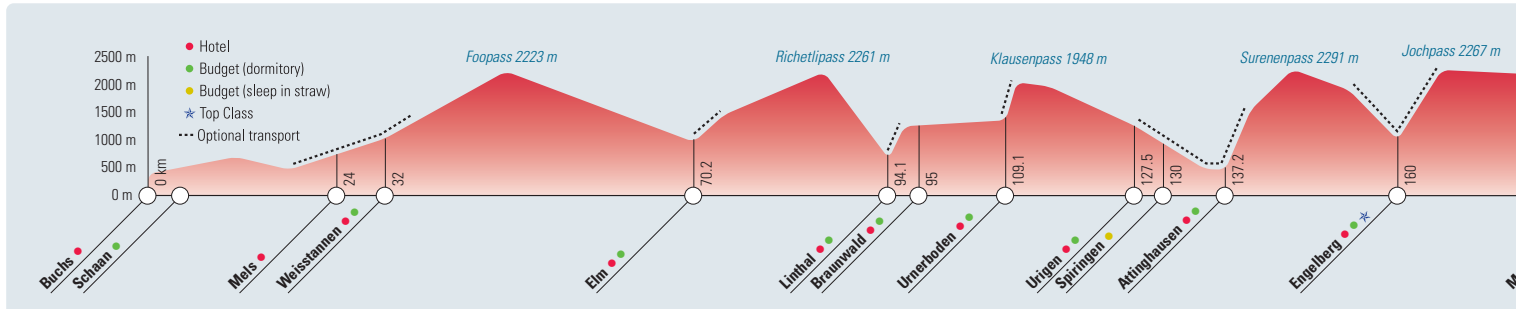


- ★ **THE GLARNER ALPS**
WITH THE FOOPASS AND RICHELIPASS
- ★ **URNERBODEN**
THE LARGEST OF THE ALPS IN SWITZERLAND
- ★ **THE CLARIDEN-HÖHENWEG HIGH TRAIL**
WITH THE COOL BREEZE OF THE NEARBY GLACIER
- ★ **THE ENGSTLEN LAKE**
A NATURAL WONDER AT THE FOOT OF THE TITLIS
- ★ **GROSSE AND KLEINE SCHEIDEGG**
FACE TO FACE WITH THE EIGER, MÖNCH AND JUNGFRAU
- ★ **THE HOHTÜRLI**
A BREATHTAKING MOUNTAIN PEAK
- ★ **GSTAAD**
WITH A TOUCH OF EXCLUSIVITY
- ★ **PAYS D'ENHAUT**
THE VERY BEST OF ALPINE CHEESE!

CHARACTER

Eight alpine countries in Europe are working together on a challenging project: their common goal is to establish official hiking trails linking all their alpine countries, from Trieste at the Adriatic Sea to Monaco on the Mediterranean. The route is officially signposted as such and – on Swiss territory between Buchs and Montreux – offers a daily luggage transport. A real trail of unsurpassable beauty awaits you.

ELEVATION PROFILE AND ROUTE STAGES



PART 1 (BUCHS-MEIRINGEN)

BUCHS - SARGANS - WEISSTANNEN

Hike: Buchs - Sargans 5:30

A gentle start – From Buchs railway station you follow the left edge of the Rhine Valley on your way to Sargans. From Sargans, postal bus transfer to Weisstannen (not included).

WEISSTANNEN - FOO PASS - ELM

Recommendation: Transfer to Untersäss (CHF 10.– / person). Hike: Untersäss - Elm, 5:30. This long stretched-out pass crossing Foo Pass leads into wild scenery with magnificent waterfalls.

ELM - RICHELTI PASS - LINTHAL

Recommendation: Take the aerial cable car from Elm (997m) to Empächli (1485m). Hike: Empächli - Linthal 5:00.

On this easy panoramic high mountain trail with superb views, you will reach Obererbs with a mountain cabin serving refreshments. This is where the climb starts in earnest up to Erbsen Stock, on to Wichlenmatt grassland and up further to Richetli Pass (2261m).

LINTHAL - BRAUNWALD - URNERBODEN

Recommendation: cable car Linthal - Braunwald. Hike: Braunwald - Urnerboden 3:00. From Braunwald you will enjoy a beautiful relaxing panoramic route. Experience alpine summer life in the holiday resort of Braunwald undisturbed by cars, and also Urnerboden Switzerland's largest Alp.

URNERBODEN - KLAUSEN PASS - ATTINGHAUSEN

Recommendation: Take aerial cable car from Urnerboden to Fiseten Pass. Hike: Fiseten Pass - Urigen, 5:00. The Clariden mountain trail from Fiseten Pass (2036m) to Klausen Pass (1948m) does not actually run over Mt Clariden, but you nevertheless get to feel the enormity of the massif and the cold breath of the nearby glacier. Take the postal bus from Urigen to Attinghausen.

ATINGHAUSEN - SURENEN PASS - ENGELBERG

Recommendation: Aerial cable car up to

Brüsti (1530m). Hike: Brüsti - Fürenalp, 5:00. This is an historic pass walk which begins in Brüsti with a spectacular ridge walk from which there is a grand vista over Lake Uri. It is worth taking the intersecting path over to Fürenalp to enable you to reach Engelberg in comfort by cablecar.

ENGELBERG - JOCH PASS - MEIRINGEN

Recommendation: Aerial cable car to Joch Pass. Hike: Joch Pass - Planplatten 5:00. A breathtaking panoramic hiking trail with only minimal differences in altitude but magnificent views of Mt Titlis, Engstlensee and the Bernese Alps. Recommendation: Aerial cable car Planplatten - Meiringen.

SEASON 2009

01.06.-15.10.2009 (daily service)

PART 2 (MEIRINGEN-LENK)

MEIRINGEN - GRINDELWALD

Recommended: postal bus Meiringen to Rosenloui. Hike: Rosenloui - Grindelwald, 5:30. A visit to the stunning Rosenloui glacier gorge is recommended. The actual walk affords spectacular views of the 3 world famous giants – Eiger, Mönch and Jungfrau.

GRINDELWALD - KLEINE SCHEIDEGG - WENGEN / LAUTERBRUNNEN

Recommended: train to Alpiglen. Hike: Alpiglen - Lauterbrunnen, 5:10. The famous pass saddle of Kleine Scheidegg at the foot of the Eiger north face is an impressive entrance into the close-up world of the magnificent high alps.

WENGEN / LAUTERBRUNNEN - SEFINENFURGGE - GRIESALP

Recommended: aerial cablecar Stechelberg - Mürren. Hike: Mürren - Griesalp, 6:30. This section of the trip truly bears the crown! As you will be going high into the Alps, this passage should be undertaken only if weather conditions are favourable.

GRIESALP - HOHTÜRLI - KANDERSTEG

Hike: Griesalp - Oeschinensee, 6:45. From

the wildly romantic alpine hamlet of Griesalp (1408m) the Via Alpina heads directly towards Hohtürli (2778m). Recommended: chairlift Oeschinensee - Kandersteg.

KANDERSTEG - BONDERCHRINDE - ADELBODEN

Recommended: chairlift Kandersteg to Allmenalp (1725m). Hike: Allmenalp - Adalboden, 5:30. The Bunderspitz (2446m) is the highest point of the day (magnificent view).

ADELBODEN - HAHNENMOOS PASS - LENK

Hike: 4:30. This section takes you into the skiing area of Hahnenmoos (1956m). From Simmen bus connection to Lenk.

SEASON 2009

15.06.-30.09.2009 (daily service)

PART 3 (LENK-MONTREUX)

LENK - GSTAAD

Recommended: cable car Lenk - Betelberg

Hike: Betelberg - Gstaad 5:30.

A magnificent panoramic view – high mountain trail with descent down to the sophisticated holiday town of Gstaad.

GSTAAD - L'ETIVAZ

Recommended: Taxi Gstaad - Hintereggli Hike: Hintereggli - L'Etivaz 5:00 Exploring the traditional cheese-making processes in the Summer Alps is fascinating.

L'ETIVAZ - ROCHERS-DE-NAYE

Recommended: Postauto L'Etivaz - La Lécherette. Hike: La Lécherette - Rocher de Naye 6:00. Breathtaking views over Lake Geneva and the Savoy High Alps from the Rocher de Naye. This marks the end of the Via Alpina in Switzerland. Recommended: Cog railway Rochers-de-Naye - Montreux.

SEASON 2009

01.06. - 15.10.2009 (daily service)



Take a break

Why not spend a rest day and stay for 2 nights at the same place?

We recommend:

- Meiringen**
Hotel Sherlock Holmes (***)
- Kandersteg**
Hotel Blüemlisalp (***)
- Gstaad**
Hotel Alhorn (***)

SwissTrails

À la Carte

Plan your own individual hiking tour: the entire route from Buchs to Montreux as well as all the stage destinations listed in the «elevation profile» are available to you with SwissTrails à la carte. You can choose the duration of the trip as well as the start and end destinations and accommodation (hotel and budget).

Pricelist see pages 48 / 49.

RATES 2008 (in CHF / Euro, per Person, incl. VAT.)

OPTIONS	START AND FINISH	DAYS / NIGHTS	HIKING DAYS	OVERNIGHTS	BASIC RATES HOTEL	BASIC RATES BUDGET
A Part 1	Buchs - Meiringen	7 / 6	7	Weisstannen - Elm - Linthal / Braunwald- Urnerboden - Attinghausen - Engelberg	CHF 953 / € 610	CHF 670 / € 430
B Part 2	Meiringen - Lenk	6 / 5	6	Grindelwald - Wengen / Lauterbrunnen - Griesalp - Kandersteg - Adalboden	CHF 785 / € 503	CHF 550 / € 352
C Part 3	Lenk - Montreux	3 / 2	3	Gstaad / Saanen - L'Etivaz	CHF 356 / € 228	CHF 262 / € 168

* Included in the price: supplements / reductions see page 5. All other options see SwissTrails à la Carte. Additional night possible at start and end destination and all stage destinations / Top Class: top class hotel (usually *****) at selected stage destinations (see Elevation Profile)

